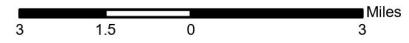
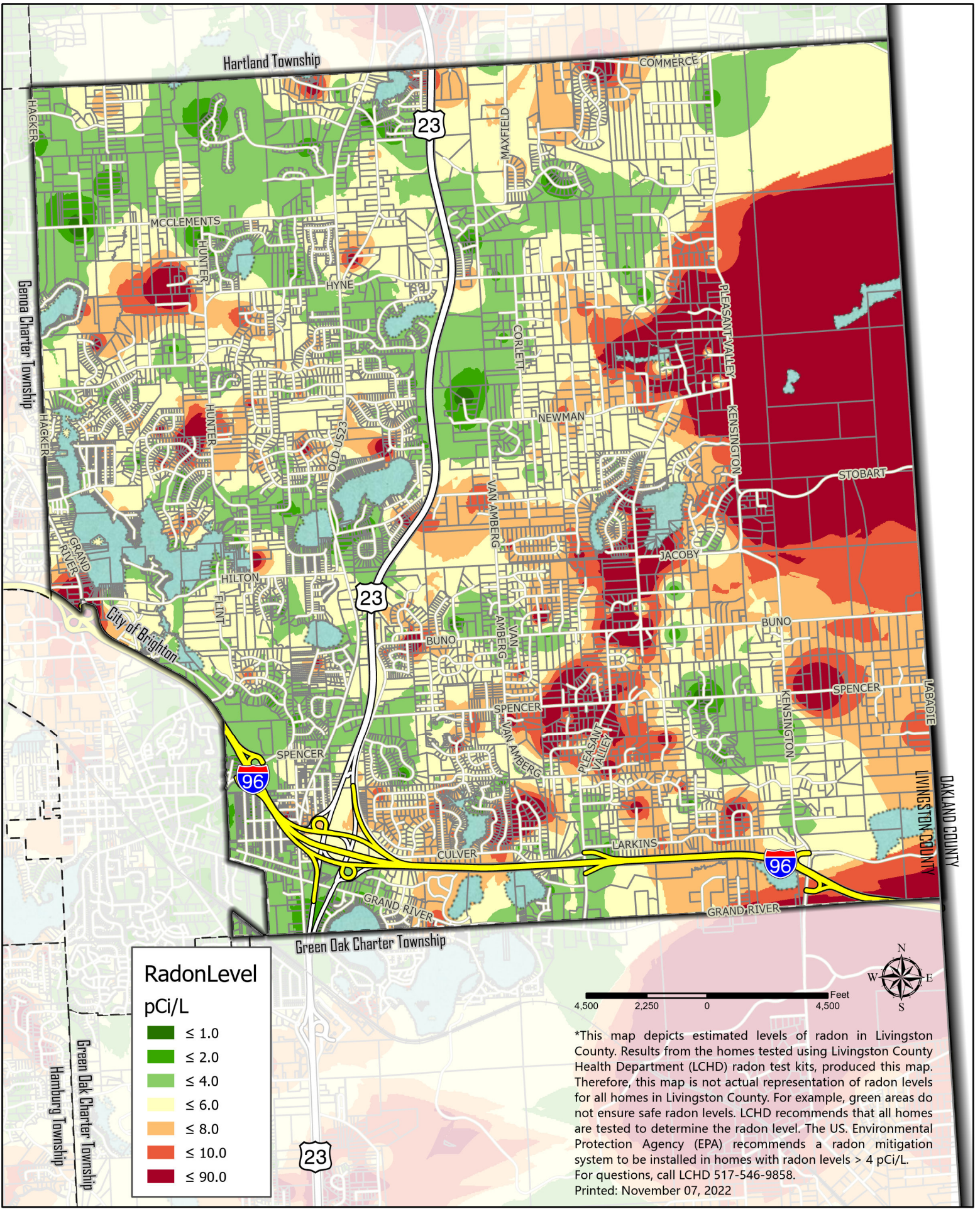


*This map depicts estimated levels of radon in Livingston County. Results from the homes tested using Livingston County Health Department (LCHD) radon test kits, produced this map. Therefore, this map is not actual representation of radon levels for all homes in Livingston County. For example, green areas do not ensure safe radon levels. LCHD recommends that all homes are tested to determine the radon level. The US. Environmental Protection Agency (EPA) recommends a radon mitigation system to be installed in homes with radon levels > 4 pCi/L. For questions, call LCHD 517-546-9858. Printed: November 07, 2022

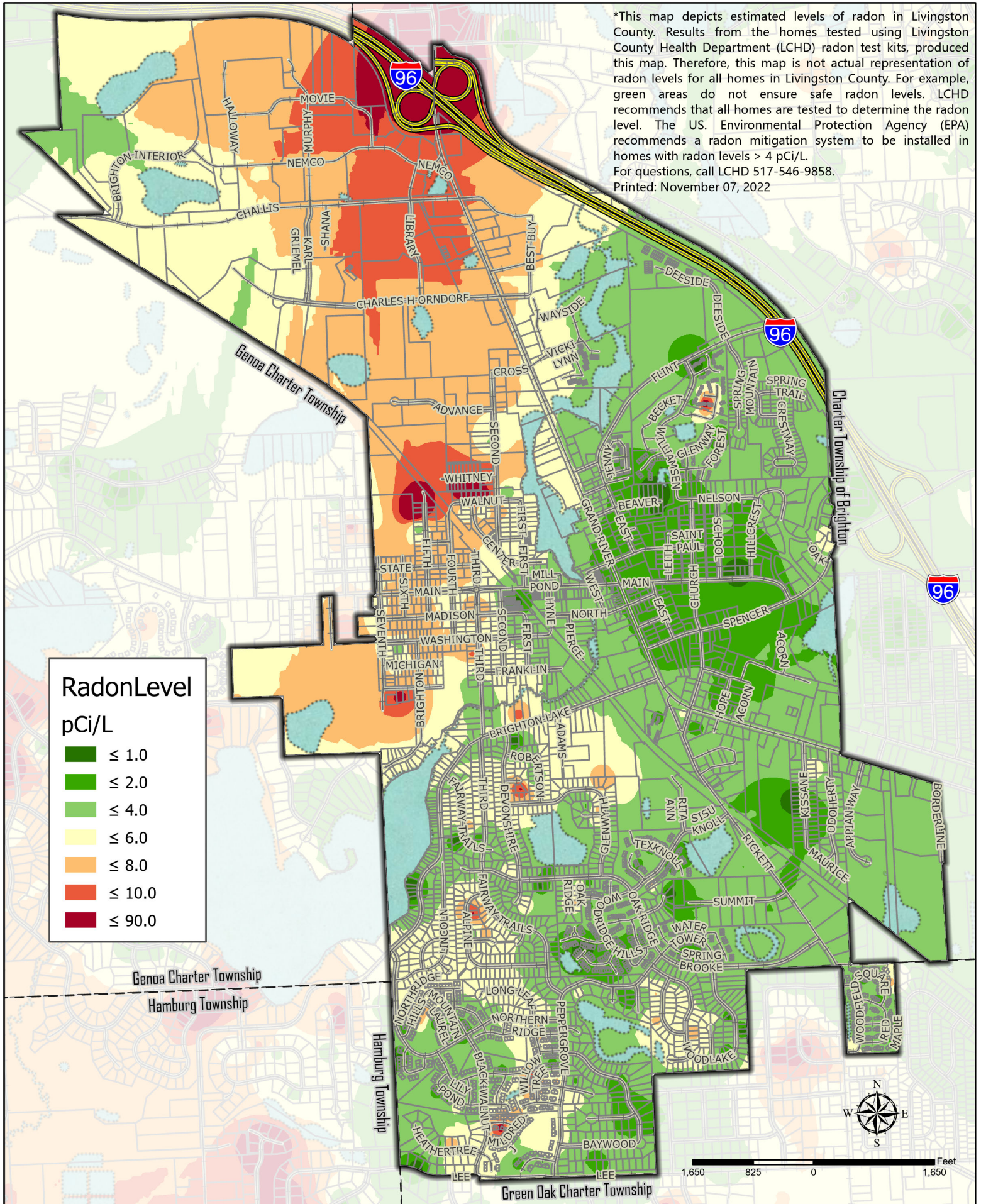




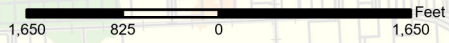
Livingston County, Michigan
 Information Technology Department
 G.I.S. Division 517.548.3230

***Estimated Radon Levels in Brighton Township**

*This map depicts estimated levels of radon in Livingston County. Results from the homes tested using Livingston County Health Department (LCHD) radon test kits, produced this map. Therefore, this map is not actual representation of radon levels for all homes in Livingston County. For example, green areas do not ensure safe radon levels. LCHD recommends that all homes are tested to determine the radon level. The US. Environmental Protection Agency (EPA) recommends a radon mitigation system to be installed in homes with radon levels > 4 pCi/L. For questions, call LCHD 517-546-9858. Printed: November 07, 2022

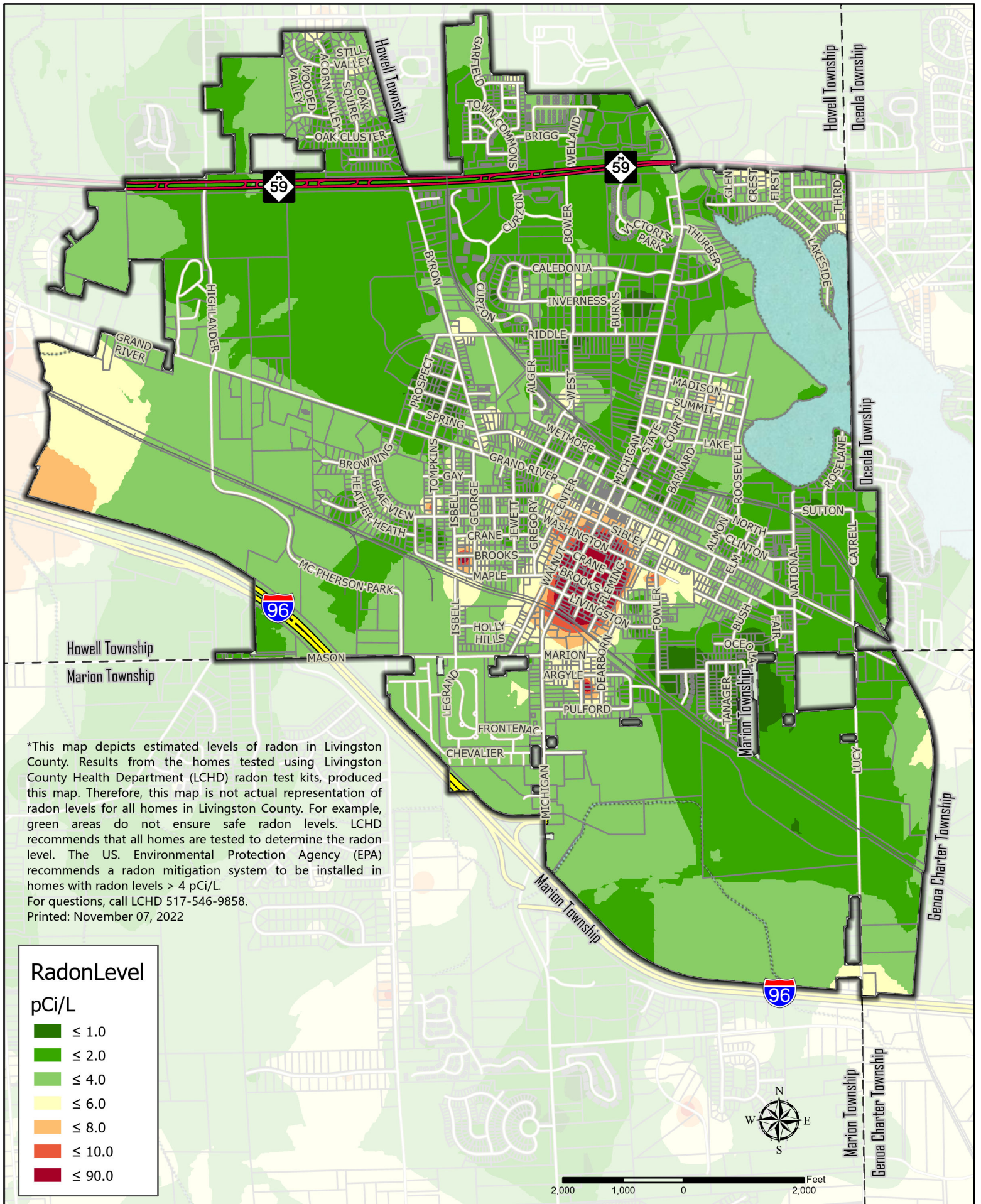


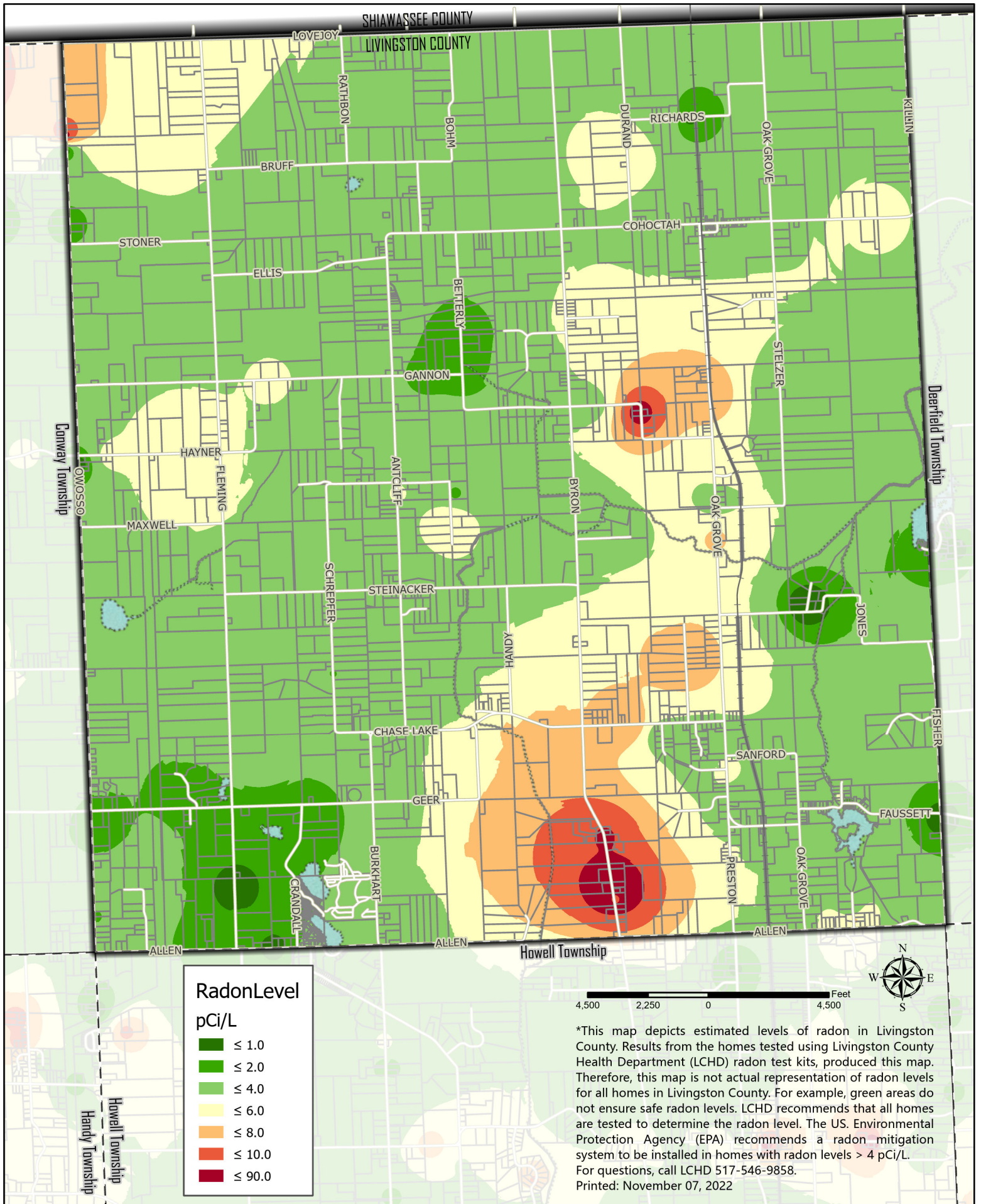
| RadonLevel | |
|----------------------------------------|--------|
| pCi/L | |
| ■ | ≤ 1.0 |
| ■ | ≤ 2.0 |
| ■ | ≤ 4.0 |
| ■ | ≤ 6.0 |
| ■ | ≤ 8.0 |
| ■ | ≤ 10.0 |
| ■ | ≤ 90.0 |

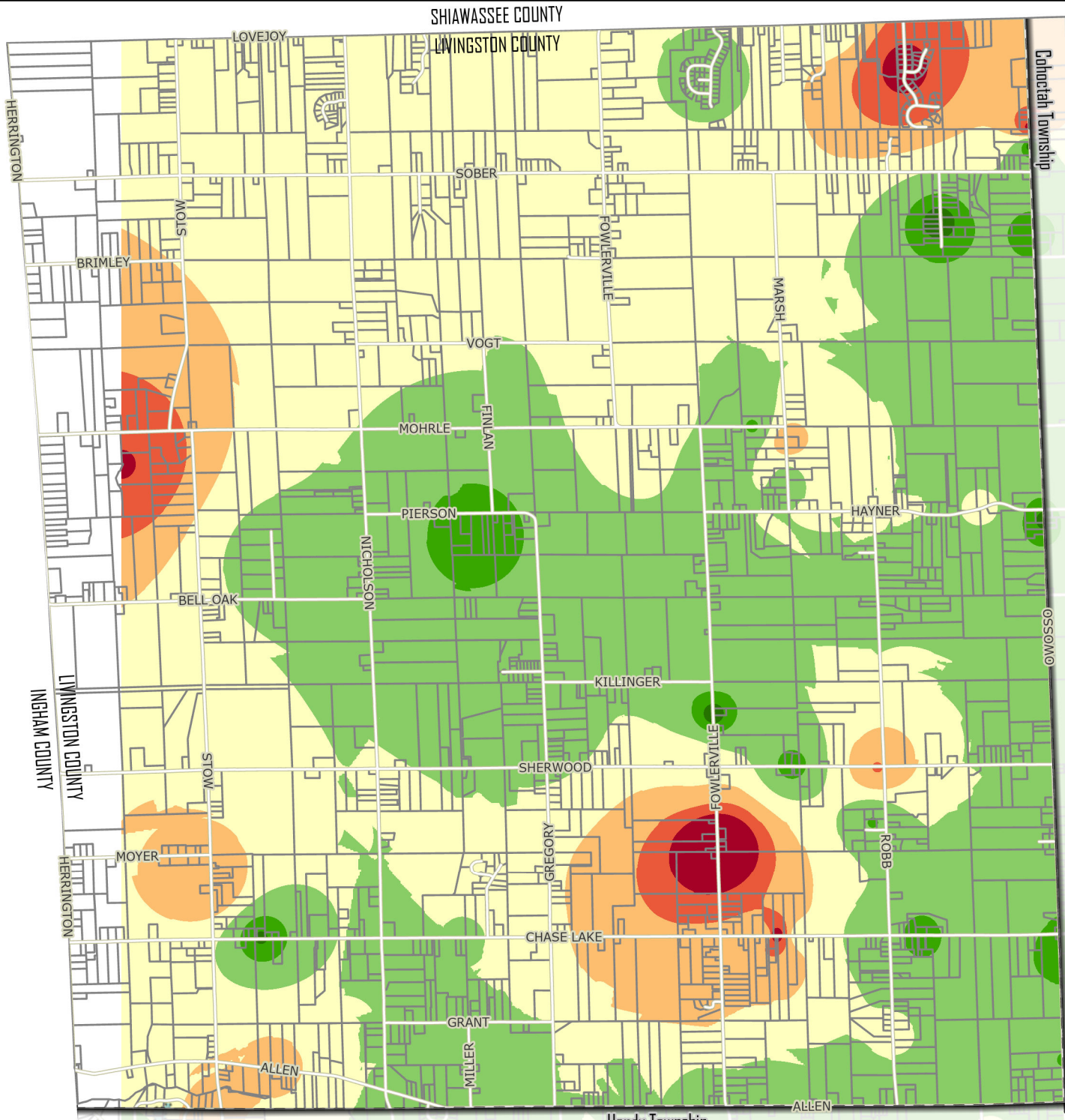


Livingston County, Michigan
 Information Technology Department
 G.I.S. Division 517.548.3230

*Estimated Radon Levels in City of Brighton





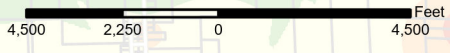


SHIAWASSEE COUNTY
LIVINGSTON COUNTY

RadonLevel
pCi/L

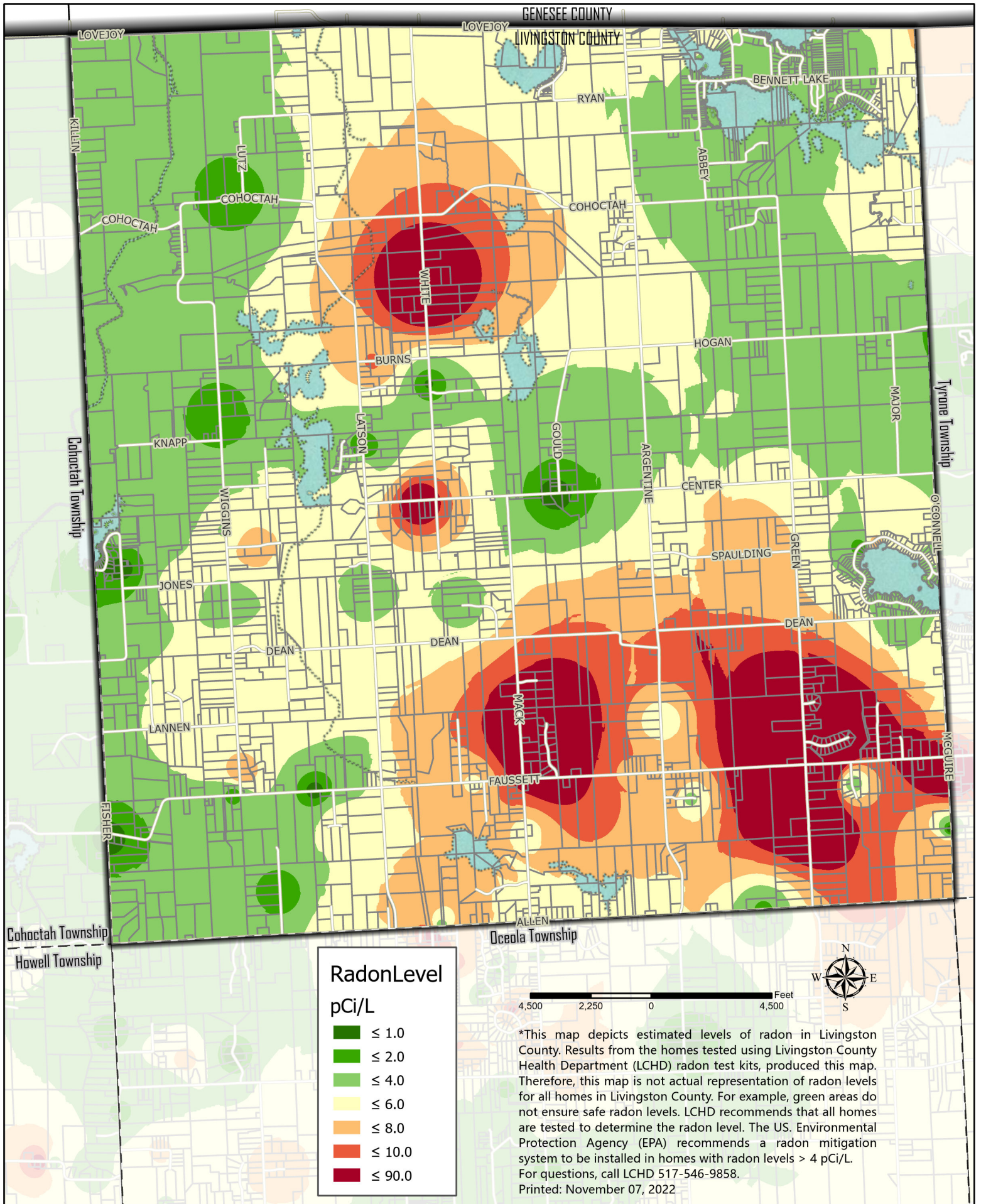
| | |
|-------------|--------|
| Dark Green | ≤ 1.0 |
| Green | ≤ 2.0 |
| Light Green | ≤ 4.0 |
| Yellow | ≤ 6.0 |
| Orange | ≤ 8.0 |
| Red-Orange | ≤ 10.0 |
| Dark Red | ≤ 90.0 |

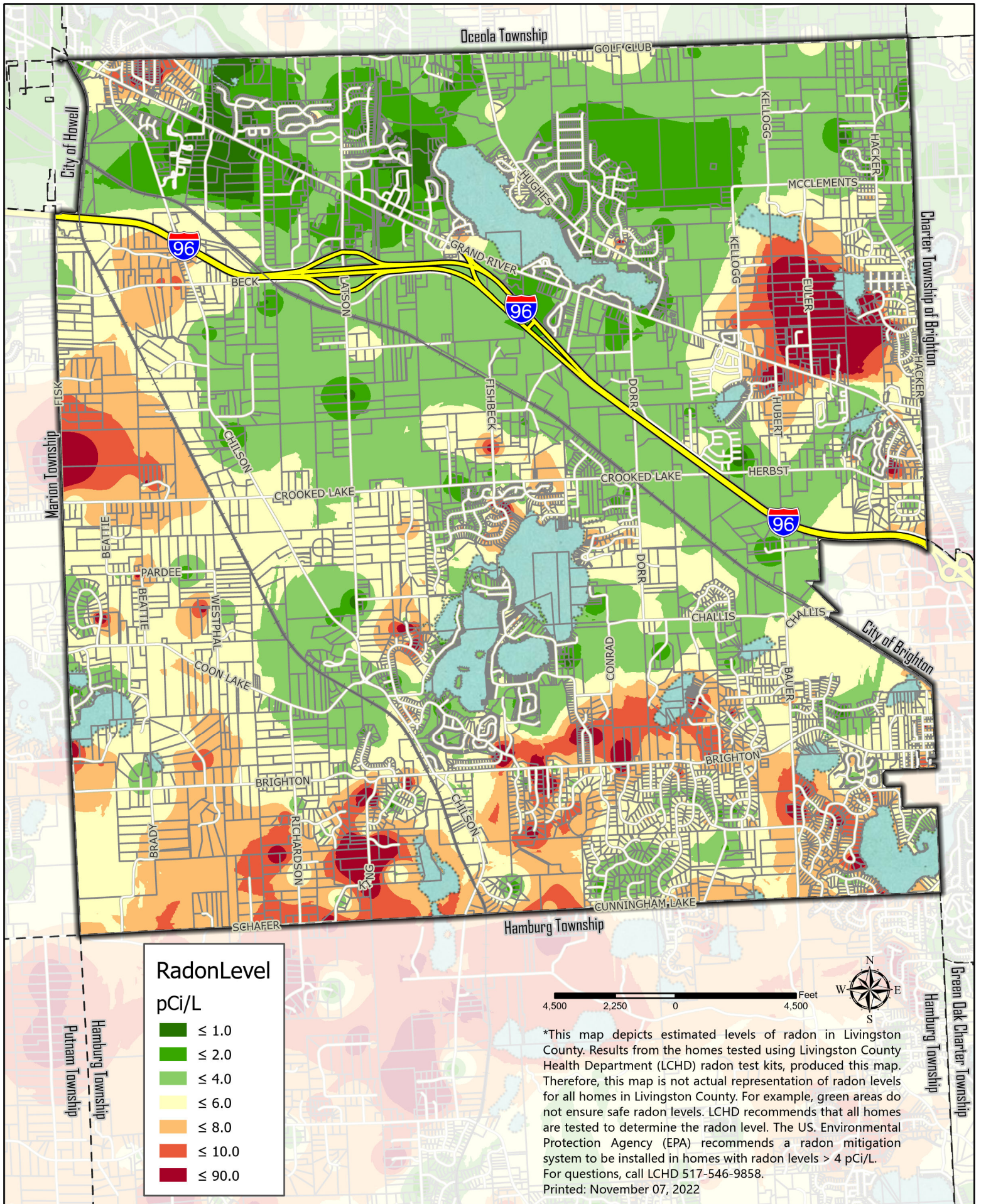
*This map depicts estimated levels of radon in Livingston County. Results from the homes tested using Livingston County Health Department (LCHD) radon test kits, produced this map. Therefore, this map is not actual representation of radon levels for all homes in Livingston County. For example, green areas do not ensure safe radon levels. LCHD recommends that all homes are tested to determine the radon level. The US Environmental Protection Agency (EPA) recommends a radon mitigation system to be installed in homes with radon levels > 4 pCi/L. For questions, call LCHD 517-546-9858. Printed: November 07, 2022

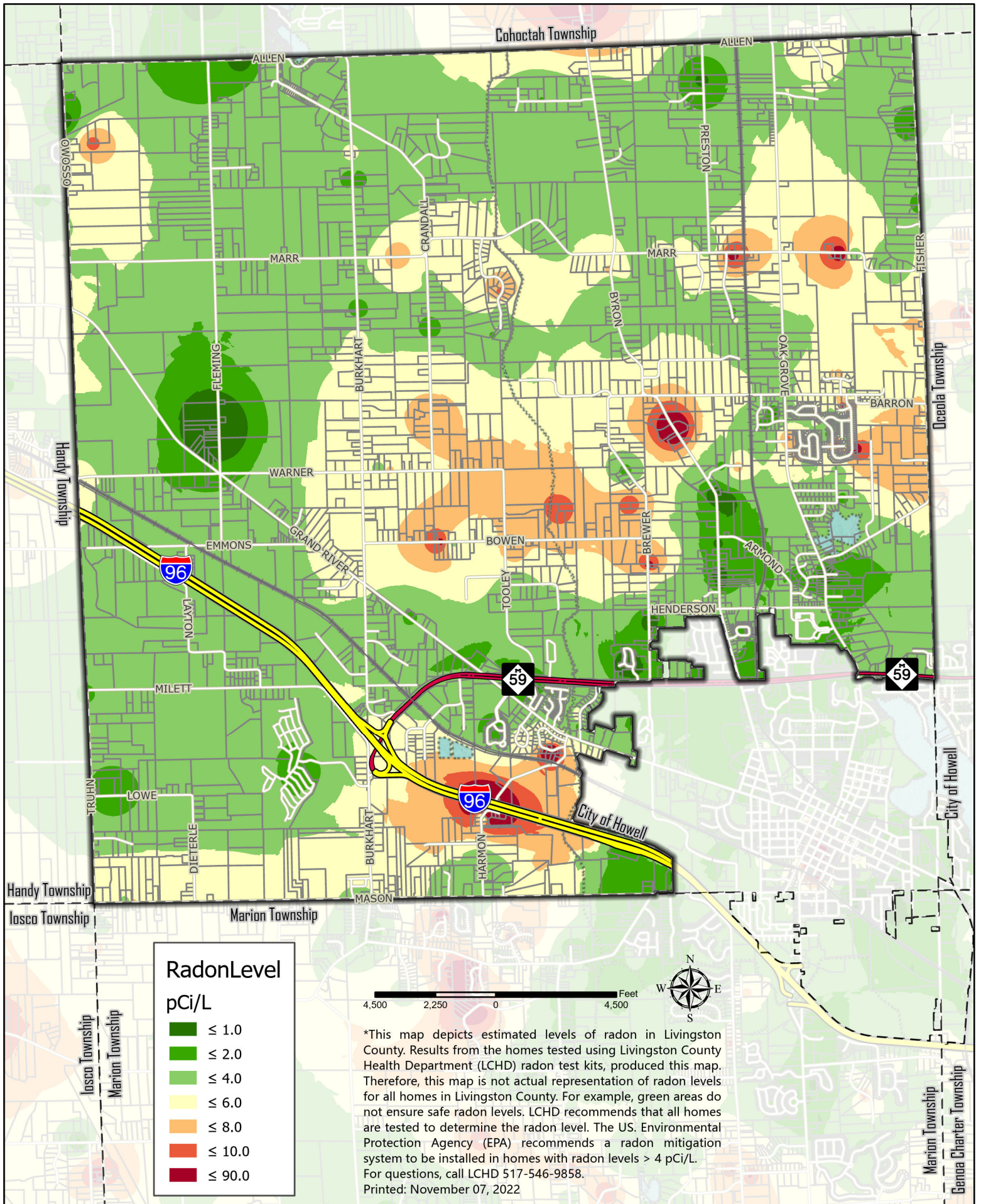


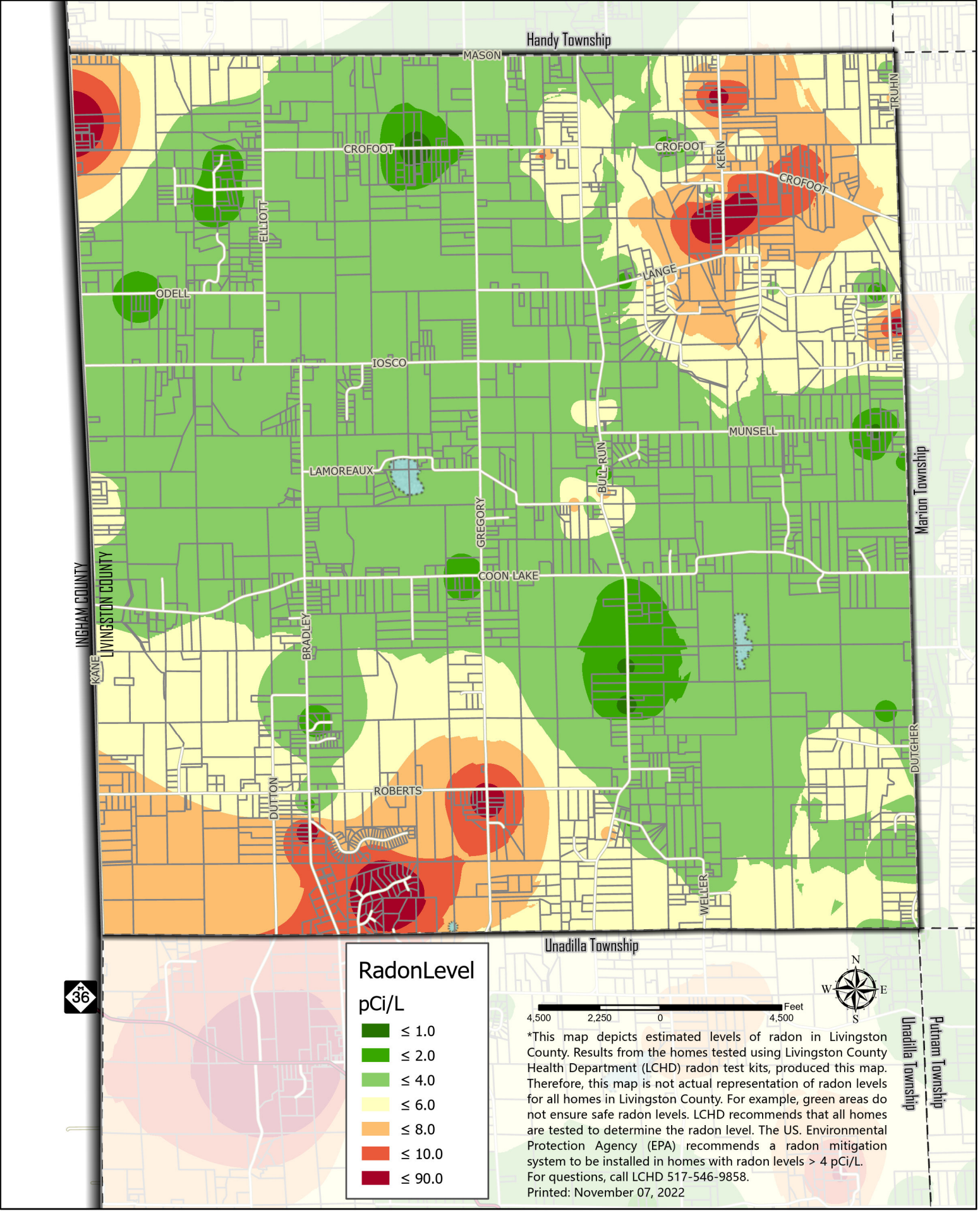
Livingston County, Michigan
Information Technology Department
G.I.S. Division 517.548.3230

***Estimated Radon Levels in Conway Township**



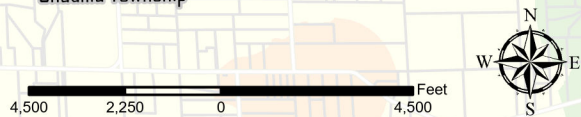






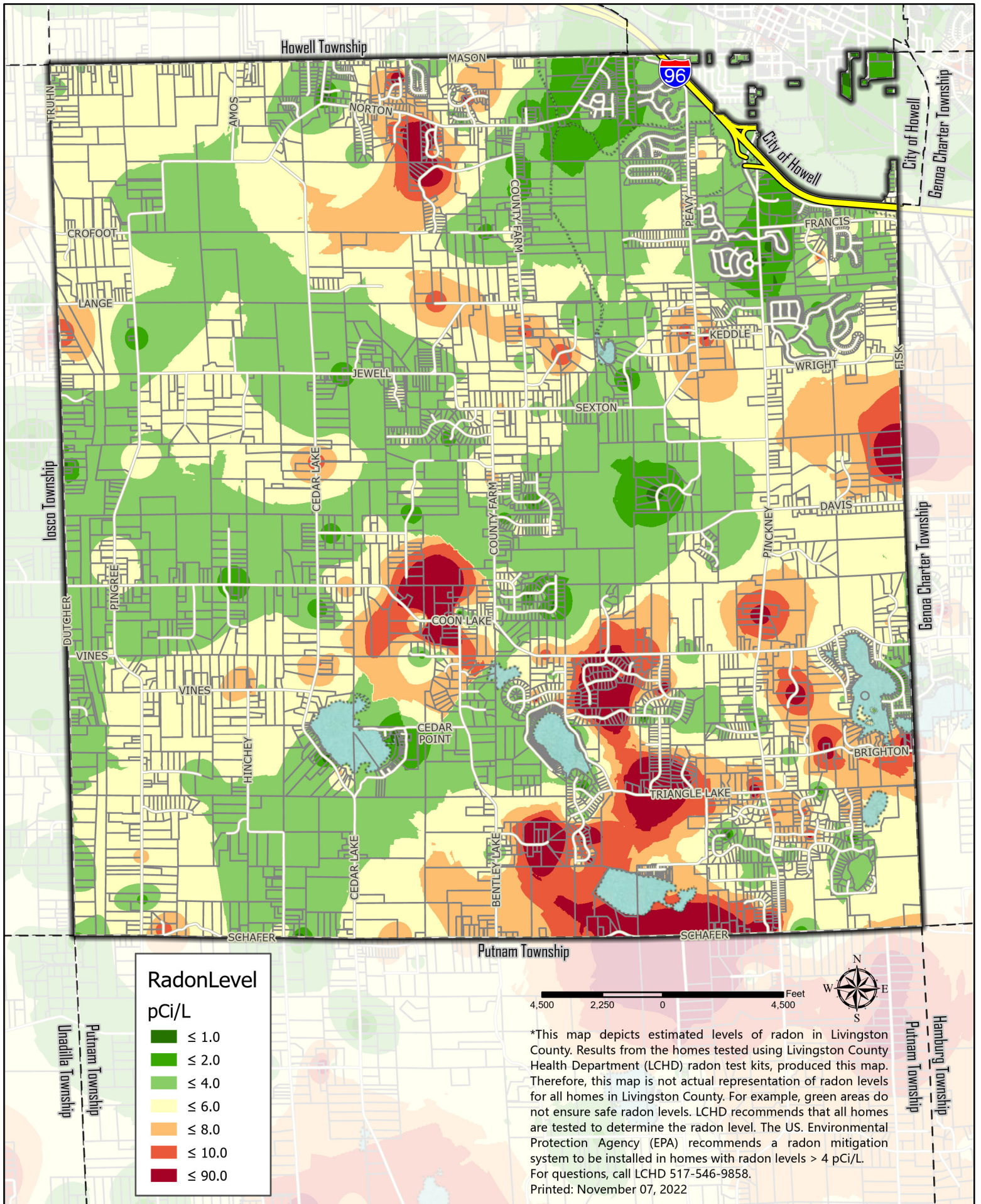
RadonLevel
pCi/L

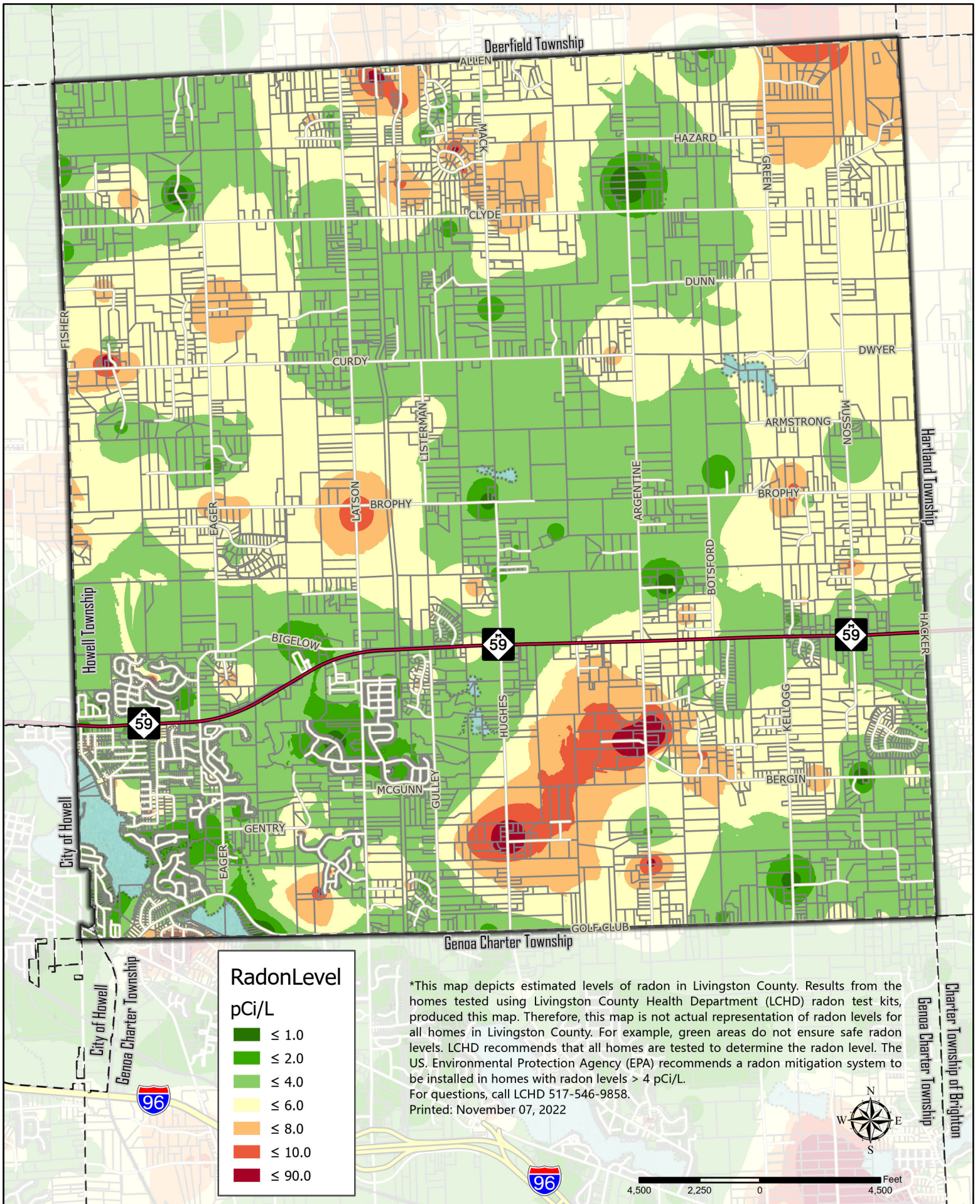
- ≤ 1.0
- ≤ 2.0
- ≤ 4.0
- ≤ 6.0
- ≤ 8.0
- ≤ 10.0
- ≤ 90.0



*This map depicts estimated levels of radon in Livingston County. Results from the homes tested using Livingston County Health Department (LCHD) radon test kits, produced this map. Therefore, this map is not actual representation of radon levels for all homes in Livingston County. For example, green areas do not ensure safe radon levels. LCHD recommends that all homes are tested to determine the radon level. The US. Environmental Protection Agency (EPA) recommends a radon mitigation system to be installed in homes with radon levels > 4 pCi/L. For questions, call LCHD 517-546-9858. Printed: November 07, 2022

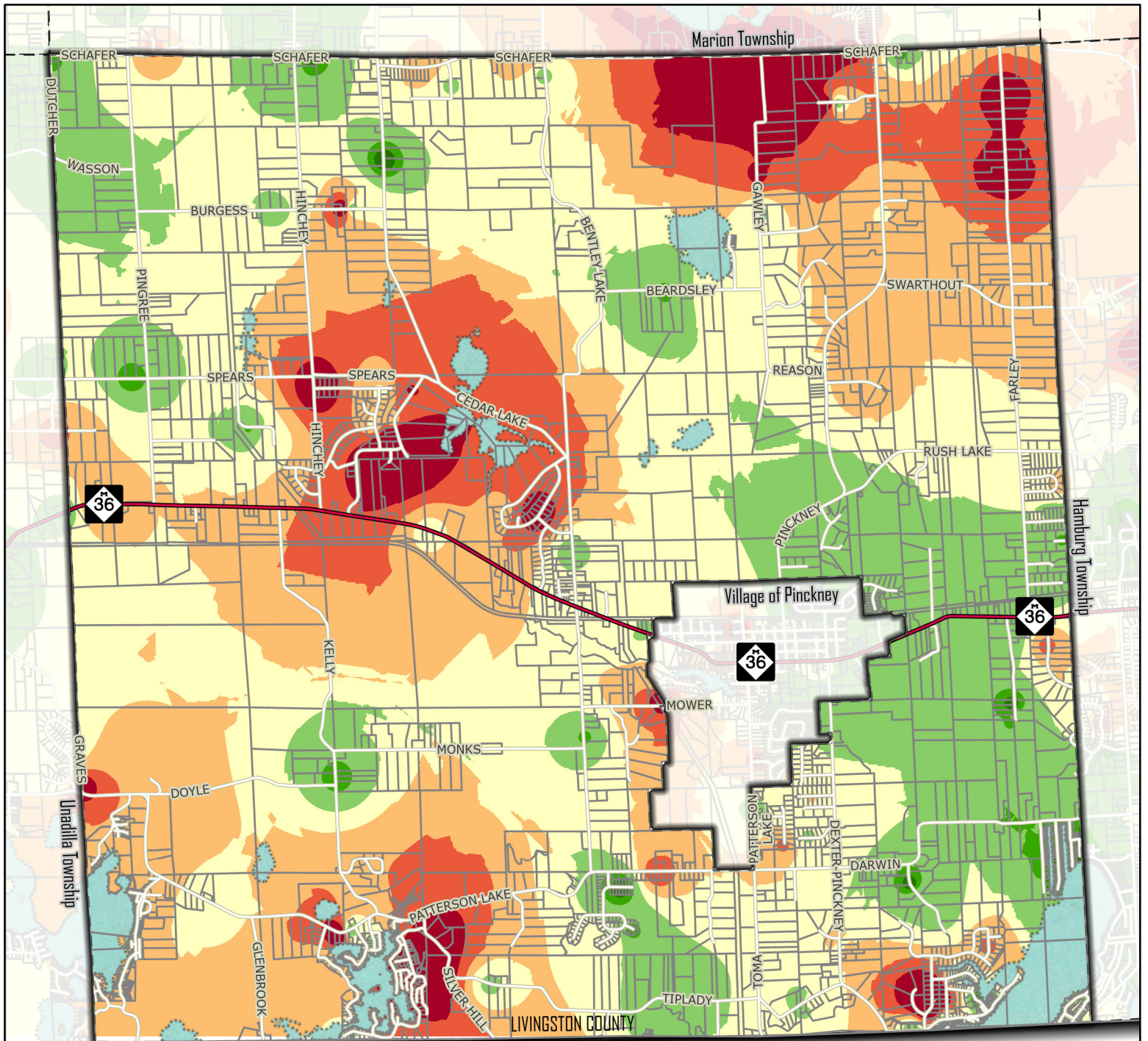













Livingston County, Michigan
Information Technology Department
G.I.S. Division 517.548.3230

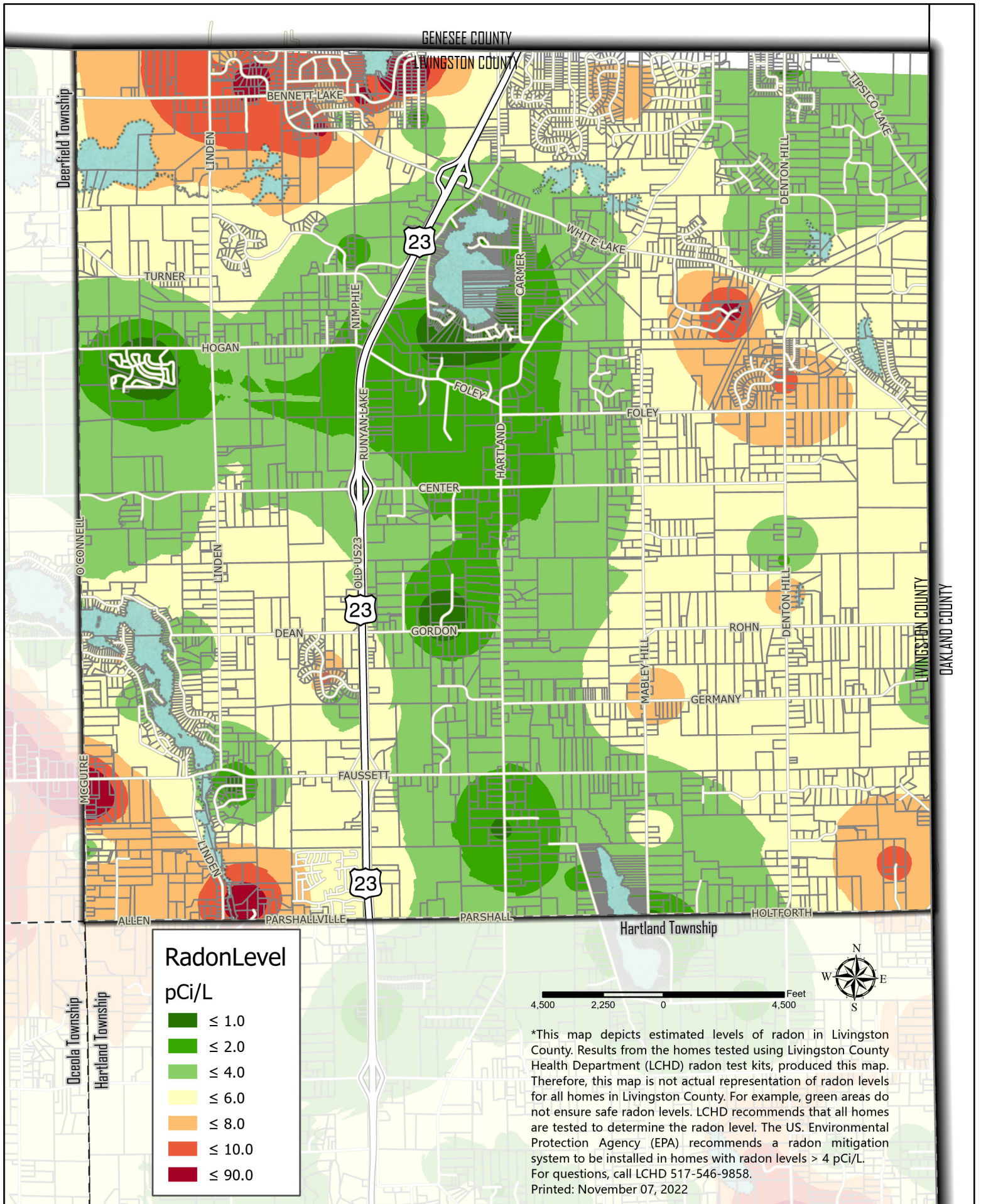
*Estimated Radon Levels in Oceola Township

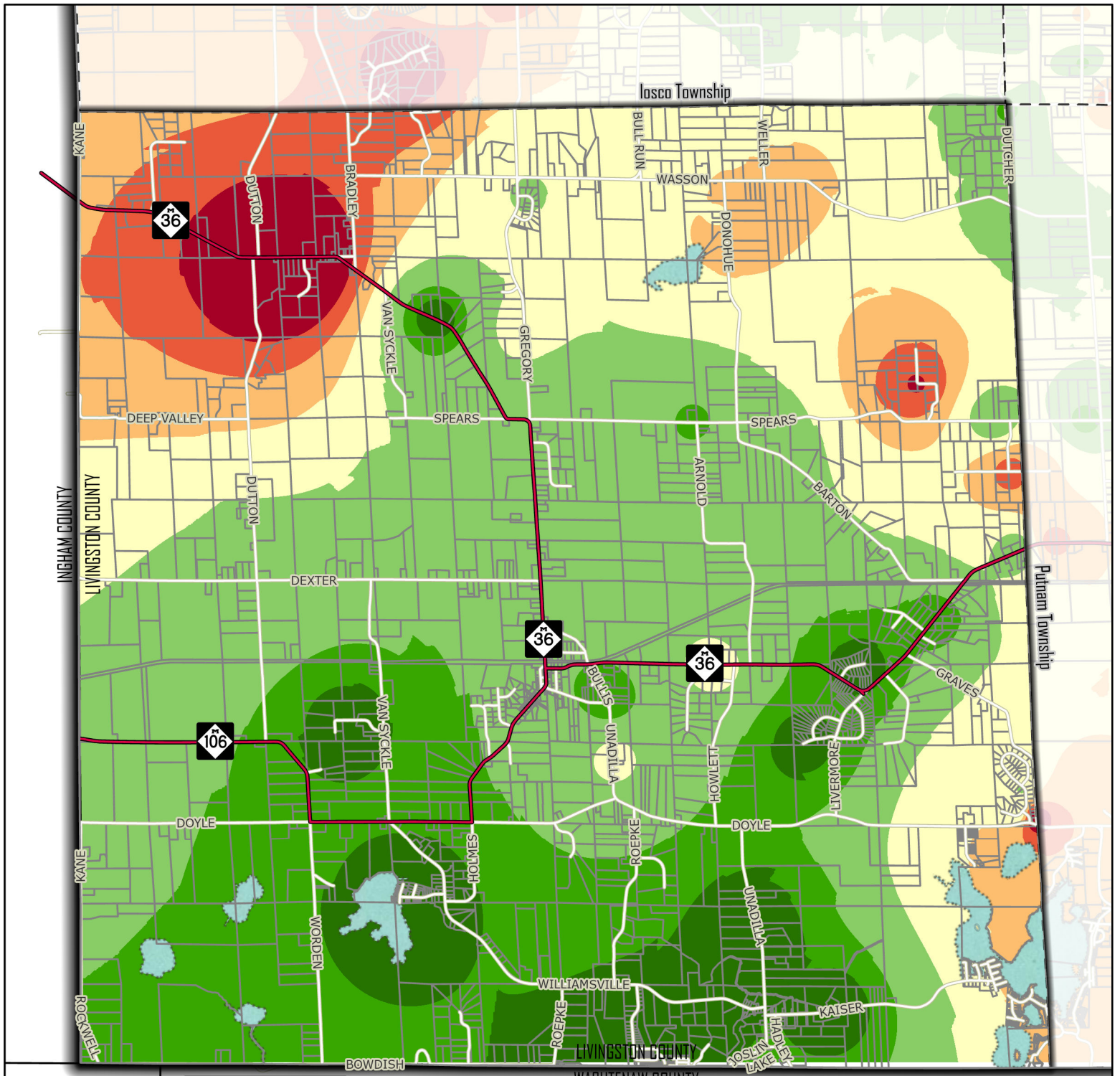


| RadonLevel | |
|-------------------------------------------------------------------------------------|--------|
| pCi/L | |
|  | ≤ 1.0 |
|  | ≤ 2.0 |
|  | ≤ 4.0 |
|  | ≤ 6.0 |
|  | ≤ 8.0 |
|  | ≤ 10.0 |
|  | ≤ 90.0 |



*This map depicts estimated levels of radon in Livingston County. Results from the homes tested using Livingston County Health Department (LCHD) radon test kits, produced this map. Therefore, this map is not actual representation of radon levels for all homes in Livingston County. For example, green areas do not ensure safe radon levels. LCHD recommends that all homes are tested to determine the radon level. The US. Environmental Protection Agency (EPA) recommends a radon mitigation system to be installed in homes with radon levels > 4 pCi/L. For questions, call LCHD 517-546-9858. Printed: November 07, 2022

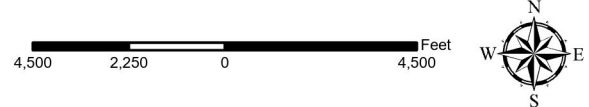




RadonLevel

pCi/L

- ≤ 1.0
- ≤ 2.0
- ≤ 4.0
- ≤ 6.0
- ≤ 8.0
- ≤ 10.0
- ≤ 90.0

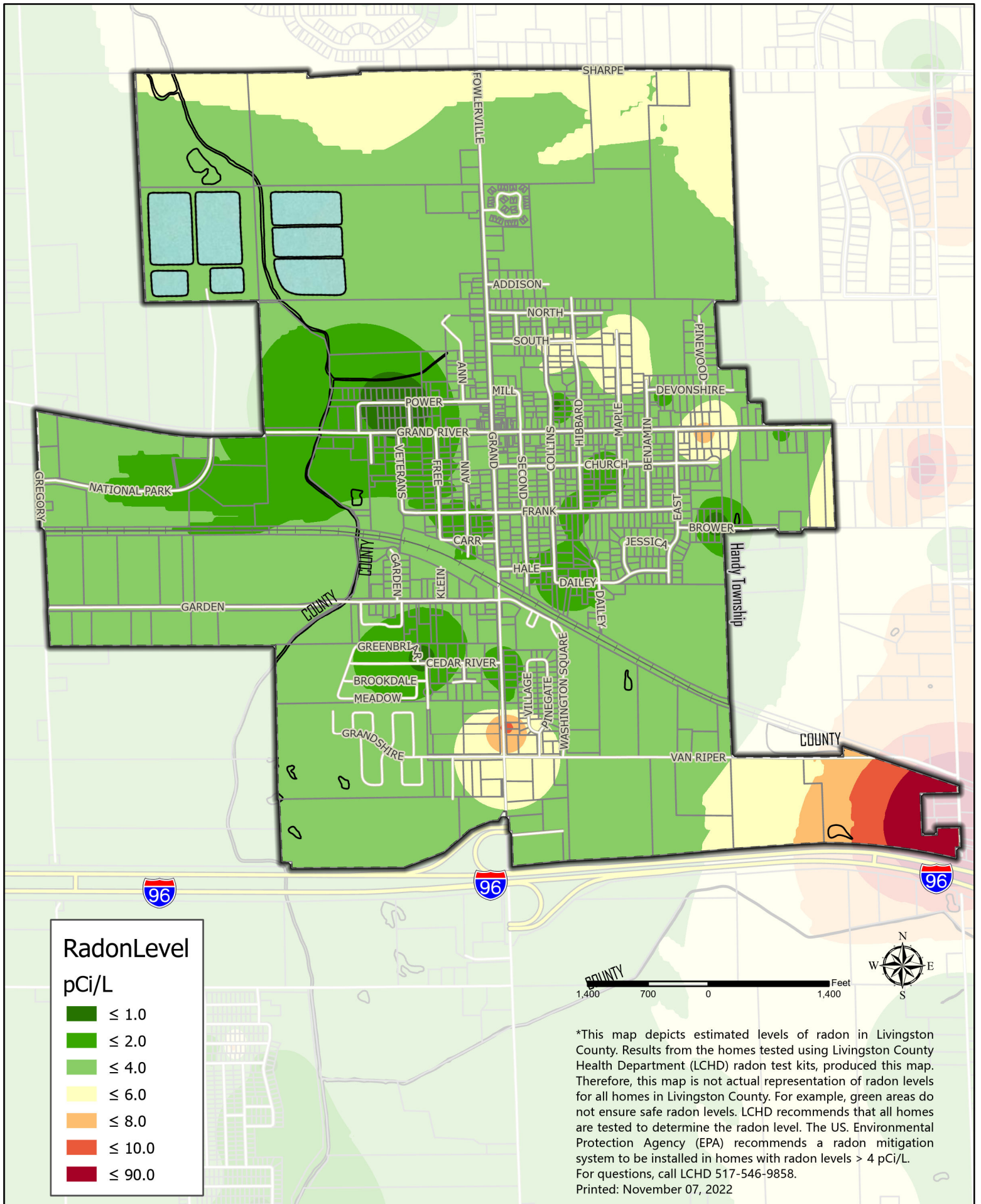


*This map depicts estimated levels of radon in Livingston County. Results from the homes tested using Livingston County Health Department (LCHD) radon test kits, produced this map. Therefore, this map is not actual representation of radon levels for all homes in Livingston County. For example, green areas do not ensure safe radon levels. LCHD recommends that all homes are tested to determine the radon level. The US. Environmental Protection Agency (EPA) recommends a radon mitigation system to be installed in homes with radon levels > 4 pCi/L. For questions, call LCHD 517-546-9858. Printed: November 07, 2022



Livingston County, Michigan
 Information Technology Department
 G.I.S. Division 517.548.3230

***Estimated Radon Levels in Unadilla Township**



RadonLevel

pCi/L

- ≤ 1.0
- ≤ 2.0
- ≤ 4.0
- ≤ 6.0
- ≤ 8.0
- ≤ 10.0
- ≤ 90.0

*This map depicts estimated levels of radon in Livingston County. Results from the homes tested using Livingston County Health Department (LCHD) radon test kits, produced this map. Therefore, this map is not actual representation of radon levels for all homes in Livingston County. For example, green areas do not ensure safe radon levels. LCHD recommends that all homes are tested to determine the radon level. The US. Environmental Protection Agency (EPA) recommends a radon mitigation system to be installed in homes with radon levels > 4 pCi/L. For questions, call LCHD 517-546-9858. Printed: November 07, 2022



Livingston County, Michigan
 Information Technology Department
 G.I.S. Division 517.548.3230

***Estimated Radon Levels in Village of Fowlerville**

